

MENU, WINE & PAYMENT HOLDERS

On the following pages we present our various collections of MENU, WINE and PAYMENT HOLDERS. All products in these collections are made from recycled leather and our wide colour palette enables you to match the collections to your complete table setting with beautiful colours and functional details that will impress your guests.

We design and produce at our own production facilities in Denmark, which secures a high level of quality and flexibility. This makes it possible for us to customize the products to your wishes and needs - and we take pride in inspiring you with new, unique designs.

Distributed by Copenhagen Design Merchants
www.merchants.dk



OSLO is an elegant collection of menu/wine folders and a payment card, designed to add on to a truly exclusive restaurant experience to your customers.

The simplistic folders, made from recycled leather, come with an elastic string inside, that will neatly hold several menu pages in place. At the same time, it allows for a swift and easy exchange of pages.

OSLO is available in size A4, A5, a tall folder, a new payment card and a double edition. The collection comes in all LIND DNA double sided leather colours (displayed on page 51), which gives you the opportunity to play with different colours on the inside and the outside of your folders.

The new OSLO DOUBLE is a perfect solution with Menu and Wine card in one. This makes it easy and elegant for both you and your guests to flip the menu.



A4/A5 folder
A4 W:22xH:33,2 cm
A5 W:15,5xH:23,6 cm



NEW Payment card
W:9H:19 cm



Front size Tall
W:11,8xH:33,2 cm



Open size Tall

CLOUD/NUPO anthracite/ pastel green	CLOUD/CLOUD black/brown	CLOUD/NUPO black/metallic	CLOUD/CLOUD black/red	CLOUD/NUPO brown/sand
NUPO/NUPO anthracite/ light grey	NUPO/NUPO army green/ nature	NUPO/NUPO dark blue/black	NUPO/NUPO light blue/ light grey	NUPO/NUPO purple/black
NUPO/NUPO rose/light grey	BULL/BULL black/brown	BUFFALO/ BUFFALO black/nature	HIPPO DOUBLE anthracite-grey	HIPPO DOUBLE black-anthracite



NEW 2-in-1 OSLO
DOUBLE MENU
A4 W:22,5xH:32,5 cm

Distributed by Copenhagen Design Merchants
www.merchants.dk



Folder - A4
landscape
W:30,9xH:22,4 cm



Folder - A4
portrait
W:22,2xH:31,1 cm

NEW YORK and BARCELONA
are available in the colours below.

CLOUD/NUPO anthracite/ pastel green	CLOUD/CLOUD black/brown	CLOUD/NUPO black/metallic	CLOUD/CLOUD black/red	CLOUD/NUPO brown/sand
NUPO/NUPO anthracite/ light grey	NUPO/NUPO army green/ nature	NUPO/NUPO dark blue/black	NUPO/NUPO light blue/ light grey	NUPO/NUPO purple/black
NUPO/NUPO rose/light grey	BULL/BULL black/brown	BUFFALO/ BUFFALO black/nature	HIPPO DOUBLE anthracite-grey	HIPPO DOUBLE black-anthracite

NEW YORK is a simple, yet sophisticated collection of menu folders, that perfectly mirror the high standard of food and beverage you serve.

The folders come in a portrait and landscape version, with steel rivets on the frontside and the backside. The rivets have an opening and closing function in the back, allowing you to exchange your paper menus easily. At the same time, they add a decorative touch.

NEW YORK is available in size A4. The collection comes in all double-sided recycled leather colours, which give you the opportunity to display different colours on the inside and the outside of the folder.

BARCELONA is a clean and elegant collection of menu folders that perfectly add on to a unique and distinctive restaurant experience, in the highest quality.

The hand-tied leather cord on the backside of the folder holds several menu pages securely in place, while at the same time adding a beautiful detail to the simplistic design.

BARCELONA is available in size A4 and A5. The collection comes in all double-sided recycled leather colours (displayed on page 52), to give you the opportunity to play with different colours on the inside and the outside of your folder.



Front size A4/A5
A4 W:24,4xH:32,8 cm
A5 W:16,7xH:23 cm



Back size A4/A5



Open size A4/A5





String and bottom add-on



Open size A4



Front size A4
W:24,4xH:32,4 cm



Front
W:9,3xH:21 cm



Open

VIENNA is a clever and detailed collection of menu and payment folders.

The VIENNA menu folder - designed for two sided menus - is embellished with a hand-stitched frame along the edges and sewn-on pieces of leather in the top and the bottom to hold your menu in place. At the same time, the sewn-on pieces make it very easy to exchange the pages inside the folder. The menu folder is available in size A4.

The VIENNA payment folder is designed to match the menu folder in the best way possible. It is embellished with a hand-stitched frame along the edges and has a sewn-on piece of leather in the bottom of the inner backside, with room for the bill and a credit card.

VIENNA and AMSTERDAM are available in the colours below.

CLOUD/NUPO anthracite/ pastel green	CLOUD/CLOUD black/brown	CLOUD/NUPO black/metallic	CLOUD/CLOUD black/red	CLOUD/NUPO brown/sand
NUPO/NUPO anthracite/ light grey	NUPO/NUPO army green/ nature	NUPO/NUPO dark blue/black	NUPO/NUPO light blue/ light grey	NUPO/NUPO purple/black
NUPO/NUPO rose/light grey	BULL/BULL black/brown	BUFFALO/ BUFFALO black/nature	HIPPO DOUBLE anthracite-grey	HIPPO DOUBLE black-anthracite

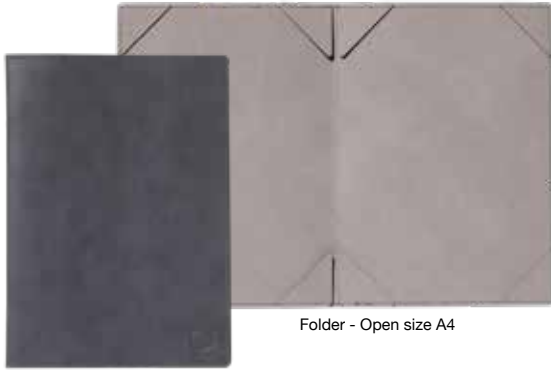
AMSTERDAM is a simplistic, yet tastefully embellished collection of menu and payment folders, that will surely set you apart from other establishments.

The menu card is elegantly embellished with a hand-stitched frame along the edges and sewn-on corners, that neatly hold your one-paged menu in place both on the front and back side.

The menu folder also provides room for two pages. Just like the board version, it is elegantly embellished with a hand-stitched frame along the edges and sewn-on corners inside that neatly hold your menu in place.

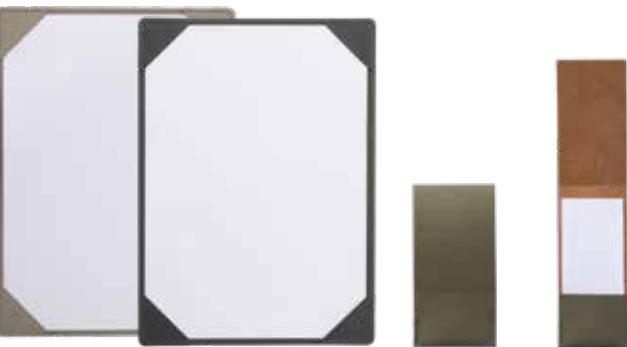
Last but not least, the collection offers a payment folder. The upper part of the payment folder can be flipped up to insert the bill and a card and then be flipped down again effortlessly to the lower part, with hand-sewn details.

The complete collection comes in all DOUBLE leather colours (displayed on page 54), which gives you the opportunity to play with different colours on the inside and the outside of all designs.



Folder - Open size A4

Folder - Front size A4/A5
A4 W:22,5xH:31,5 cm
A5 W:16,8xH:22,8 cm



Card - Front size A4/A5
A4 W:22,9x31,5 cm
A5 W:16,8xH:22,8 cm

Payment holder
Front size
W:9xH:18 cm

Open

Distributed by Copenhagen Design Merchants
www.merchants.dk

AARHUS COLLECTION



AARHUS is an informal, yet upscale collection of menu holders that will make a great first impression on your customers.

It is an effortless flip-over concept that can be used in a landscape and a portrait version. It comes with a leather cord in the top, holding frontside and backside together. The leather cord - adjusted with an oak bead - will hold even numerous pages securely in place. To ensure great stability, the backside of the board is made of two layers of leather.

AARHUS is available in size A4. The collection comes in all double-sided recycled leather colours (displayed on page 57), which gives you the opportunity to surprise your customers with an extra colour when opening the menu.



AARHUS A4
W:22,5xH:31 cm



ROME COLLECTION



ROME is an innovative and stylish collection of menu holders that will delight your customers, while choosing their servings.

It is a flip-over concept, with decorative steel rivets in the top, holding frontside and backside together. The rivets have an opening and closing function in the back. To ensure great stability, the backside of the board is made of two layers of leather.

ROME is available in size A4 and A5. The collection comes in all double-sided recycled leather colours (displayed below), which gives you the opportunity to surprise your customers with an extra colour when opening the menu.

AARHUS and ROME are available in the colours below.

CLOUD/NUPO anthracite/ pastel green	CLOUD/CLOUD black/brown	CLOUD/NUPO black/metallic	CLOUD/CLOUD black/red	CLOUD/NUPO brown/sand
NUPO/NUPO anthracite/ light grey	NUPO/NUPO army green/ nature	NUPO/NUPO dark blue/black	NUPO/NUPO light blue/ light grey	NUPO/NUPO purple/black
NUPO/NUPO rose/light grey	BULL/BULL black/brown	BUFFALO/ BUFFALO black/nature	HIPPO DOUBLE anthracite-grey	HIPPO DOUBLE black-anthracite



ROME A4 w. rivets
W:22,5xH:31 cm



ROME A5 w. rivets
W:16,5xH:22,5 cm

LONDON COLLECTION



LONDON is a contemporary collection of traditional clipboards with a twist - making it clear to your customers that they have come to a place that values improvement and rethinking of the status quo.

The collection consists of a simplistic clipboard version and a folder version.

The clipboard is available in size A4, A5 and A6. To ensure great stability, the backside is made of two layers of leather. It comes in all of LIND DNA's single-sided recycled leather surfaces and colours.

The folder version is available in size A4, A5 and A6 and can be made with an optional holder for a pencil inside. It is available in all double-sided recycled leather colours (displayed below), which gives you the opportunity to display different colours on the inside and the outside of the folder.

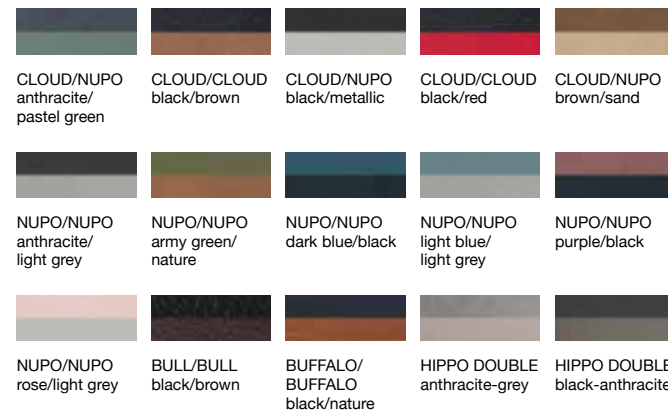


LONDON clip board
Front size A4/A5/A6
A4 W:22,5xH:31 cm
A5 W:16,5xH:22,5 cm
A6 W:13xH:18 cm



LONDON folder with clip
Front size A4/A5/A6
A4 W:23xH:21,5 cm
A5 W:16,5xH:22,5 cm
A6 W:12xH:18 cm

LONDON folder is available in the colours below.



WITH PENCIL ADD-ON

COPENHAGEN COLLECTION



COPENHAGEN is a contemporary collection of menu boards, inspired by traditional clipboards - designed with a stylish new twist. Instead of the clip, we have added an overlay of leather and studs in the top, which make it easy to open and close the board within a heartbeat and allows for a swift and easy exchange of the papers inside.

COPENHAGEN I and II are available in size A4 and A5. They come in all single-sided recycled leather surfaces and colours. To ensure great stability, the backside of the board is made of two layers of leather.



COPENHAGEN I
size A4/A5
A4 W:22,5xH:31,3 cm

COPENHAGEN II
size A4/A5
A5 W:16,5xH:22,5 cm

Distributed by Copenhagen Design Merchants
www.merchants.dk



LISBON with leather strap closure



LISBON SPECIAL with leather strap closure

LISBON COLLECTION

LISBON is a minimalistic and practical, yet elegant collection of folders that can be used in various different settings.

Inspired by the functionality of a classic binder, LISBON comes with a sleek black ring mechanism that makes it easy for your customers to quickly browse through numerous pages - perfect for a large menu or as a binder with important information in hotel rooms.

As all of our menu folders, LISBON can be made with several different closing options.

LISBON is available in size A4, A5 and a new A4 special edition. The collection comes in all double-sided recycled leather colours (displayed on page 58), which gives you the opportunity to play with different colours on the inside and the outside of your folder.

The new LISBON SPECIAL is perfect for hotel rooms or receptions as an informative folder. We have added an extra leather "pocket" for more visible information - e.g. safety instructions. This version comes with a closure option.



Front size A5

Open size A5
W:15,9xH:23 cm


Open size A4

Front size A4
W:23xH:32,8

LISBON SPECIAL
open size A4


Open LISBON SPECIAL with leather strap closure





BRUSSELS COLLECTION

BRUSSELS is an accomplished and robust collection of restaurant and hotel binders in an upgraded quality.

The collection comes in two different versions - BRUSSELS I and BRUSSELS II - both with a strong wool lining inside and embellished with a hand-stitched frame along the edges. They come with a sleek black ring mechanism inside, that makes it easy for your customers to quickly browse through numerous pages in a short time. BRUSSELS I is bound in recycled leather all the way around. BRUSSELS II comes with leather in the front and the back - allowing the wool to beautifully show at the spine.

The collection comes in all single-sided recycled leather surfaces and colours.



BRUSSELS I
Open size A4/A5
A4 W: 23,5xH:32,8 cm
A5 W:16,5xH:23,5 cm

Front size A4

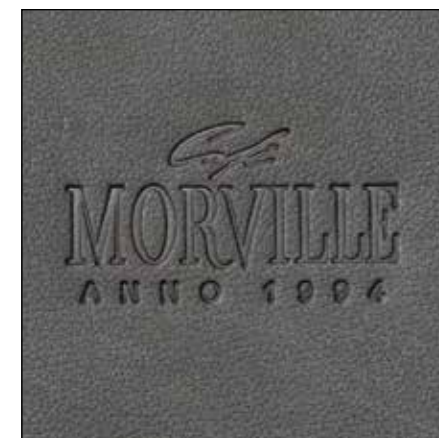
BRUSSELS II
Front size A4/A5
A4 W: 24xH:32,8 cm
A5 W:17xH:23,5 cm

Open size A5

ADD ONS

Choose among different add ons to the design of your menu and wine holders.

The following embossments: MENU, WINE and DRINK below are standard graphics, and can be used on all our menu and wine holders.



Logo embossment



Pencil holder



String & bottom closing



Inner sleeve



Pencil & clip solution



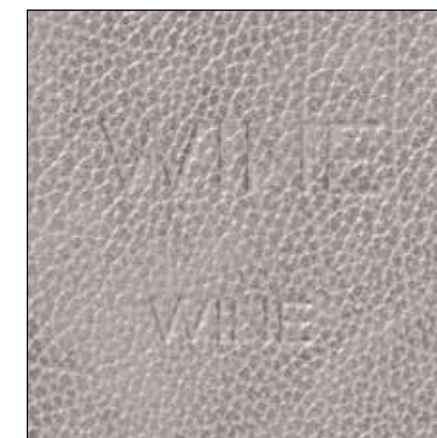
Strap closing



Drinks embossment



Menu embossment



Wine embossment

Distributed by Copenhagen Design Merchants
www.merchants.dk

PAYMENT HOLDERS

WOOD BOX

Our lovely wooden boxes are not only suitable for snacks or storage, they can also serve as neat and unique payment holders. Sourced from European oak and treated with vegetable oil, these wooden boxes come in OAK nature and smoked version to provide an exclusive look to your table setting. The lid comes in all our colours to either match your style or be a statement piece of its own.



WOOD BOX
CURVE



WOOD BOX
CIRCLE



WOOD BOX
SQUARE

OSLO

To match your menu or by itself, the OSLO payment holder is designed to hold a bill and a credit card for a discreet and elegant payment transaction. Just as the rest of the collection, OSLO is available in all double leather colours, which allows you to play with different colours to match your style.



Front size
W:9xH:18 cm



VIENNA

The VIENNA payment folder is embellished with a handstitched frame along the edges and a sewn-on piece of leather in the bottom of the inner back-side, with room for the bill and a credit card. Available in all double leather colours.



Open



Front size
W:9,3xH:21 cm

BERLIN

The payment folder is lined with strong wool on the inside and it comes with all single-sided recycled leather colours in the front and the back - allowing the wool to beautifully show at the spine. It is embellished with a hand-stitched frame along the edges and it offers two open pockets for the bill and a credit card inside.

The payment card comes with leather on the frontside and wool on the backside. It is beautifully embellished with a hand-stitched frame along the edges and comes with two open pockets for the bill and a credit card on the backside. Available in all single colour designs.



Front size
W:11,5xH:21 cm



Open



Front size
10,8x23 cm



Back

STOCKHOLM

STOCKHOLM offers room for both the bill and a credit card. The flip adds discretion and the metal corners holds everything into place. Available in all double leather colours.



Front size
W:9xH:18 cm



Open



AMSTERDAM

The upper part of the AMSTERDAM payment holder can be flipped up to insert a bill and a card and flipped down and stay in place under the hand-sewn details on the front. It is available in all double leather colours.



Front size
W:9xH:18 cm



Open

